

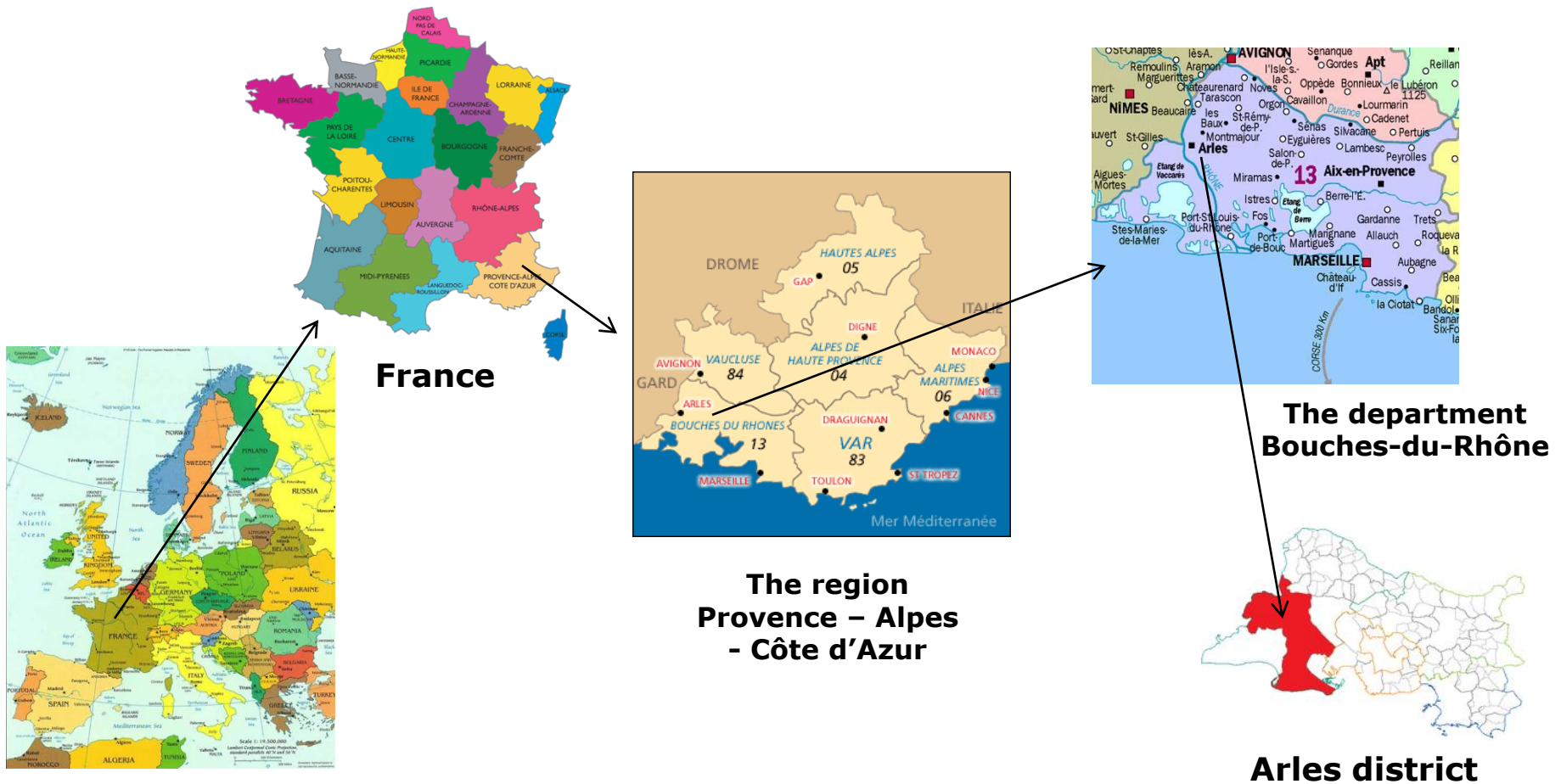
Ageing well: be active!

A Grundtvig project – 2012-2014

CCI PA's contribution:
Presentation of our organisation
and
approach of the project implementation
in our country.



geographical situation



Sources of the maps :

Europe: http://www.europa-planet.com/carte_europe.htm

France: <http://www.cartesfrance.fr/carte-france-departement/carte-france-departements.html>

PACA: http://www.littoral-varois.com/carte_var.htm

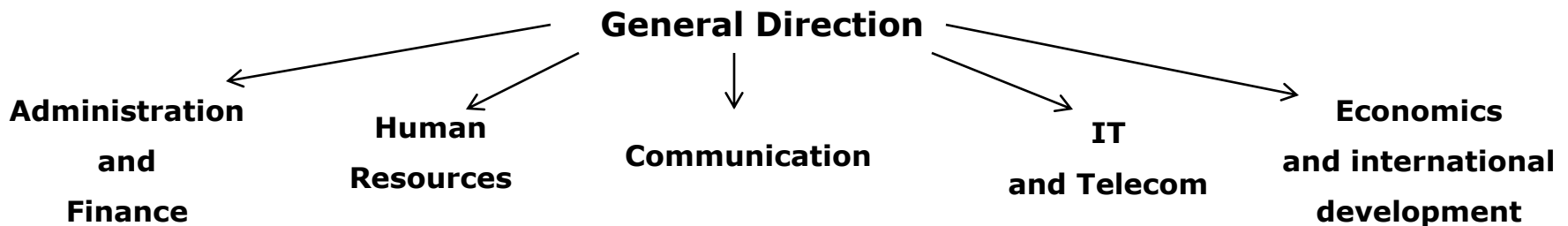
Bouches-du-Rhône: http://www.voyagesphotosmanu.com/carte_bouches_rhone.html

Arles: <http://fr.wikipedia.org/wiki/Arles#Localisation>

CCI PA's goals and structure

The main missions of CCIPA are
Providing enterprises with Proximity Services,
Federate local actors of socio-economical, cultural and other sectors.
Improving innovation and creation.

For CCIPA, « enterprise » means much more than « company »; it is also a special spirit for development at different levels (local, regional, even personal by handling one's own life).



6 Directions :

- ✓ Companies' Development
- ✓ Territory and Networks' Development
- ✓ International Conference Hall and Regional Business
- ✓ River Port
- ✓ IRA (Regulation and Automation Institute)
- ✓ Employment and Training

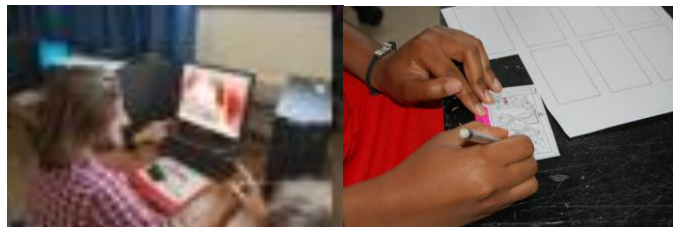
Direction of employment and training



The « horse's city »:
training vocational center



CFC in Châteaurenard:
vocational trainings on wood trades,
basic skills in infography, etc.)



Supinfocom
(high school of infography):
a 5 year training course



CFC in Arles:
Lifelong learning
training center .../..

CFC (Lifelong Learning Training Center) in Arles



✓ **CFAIM (Inter Mediterranean Vocational Training Center)**

It provides young people with a diploma after a long term (1 to 3 years) training course (trade, tourism, etc.)

✓ **FPC (Lifelong Vocational Learning) department**

It provides workers and entrepreneurs with training courses about different knowledge (accounting, computing, foreign languages, safety, hygiene and quality, care services for individuals, etc.)

It provides diplomas or not, according to the training course.

✓ **Point A:** Department which improves relationships between companies and young people (still at school or job seekers).

✓ **ISP (Social and Vocational Insertion) department**

Its mission is to address particularly to people with social difficulties: unemployed people (short and long term), very low skilled job seekers or workers (as well young and seniors), handicapped persons, lonely mothers, retired, etc.

The ISP (Social and Vocational Insertion) department

- **APP** (Personalised Pedagogical Workshops)

→ A special label (recognised at the national level) for personalised trainings on key competences. French (especially about writing skills and expressing for a job activity or an exam)

- ✓ Mathematics, logic
- ✓ ICT
- ✓ English

We also propose preparations for competitive examinations or exams. Furthermore, trainees can start and finish their training period at any time.



- **Various Training courses**

Ex:

- ✓ Regional Training Courses : they are funded by the region and are usually linked with key competences.
- ✓ Personalised assistance for learners who follow a distance training with the National Centre for Distance Education (CNED)
- ✓ Training courses on general subjects (French, Mathematics, English etc.) for young people of Arles-Avignon football training centre (1st or 2nd division club).
- etc.

- EOEP

(Resources place and services about culture and training)

This department's activities are funded by the Region and aim at create social links and intergenerational exchanges with the help of local partners.

→ Free access to ICT tools

→ Organisation of special workshops (ex : reading, photo, dance, music, local traditions, stress management techniques, conferences about eco-citizenship, etc.)

→ Cultural activities outdoors (theatre, concerts, photo, guided visits of the local patrimony).



Project implementation in our country

✓ Ageing: a great part of our learners can be focused.

✓ Thematic workshops and results: the learners involved in the project will participate in the cultural activities of EOEP (the Resources place and services of our Social insertion department), especially in the workshops dedicated to photography, local cultural identity and patrimony, environment and everything linked with the project. We'll build the program taking into account our participation into "Ageing well: be active!" program.

✓ ICT and English courses: both are provided in our centre, usually separately and we'll build some new courses in order to offer them together as a mix.

✓ Mobilities: we'll conduct special sessions for the preparation of the mobilities. Indeed, a lot of people are excited to go abroad but also a bit afraid especially about language and communication.

✓ Hosting meeting: all the participants in the project will be proposed to take part in the organisation of the hosting meeting. We hope to be able to make you like our town in summertime.

**Thank you
for your attention !**